

DaeHyup Tech

CRAFTSMANSHIP COVERING YOUR DECK

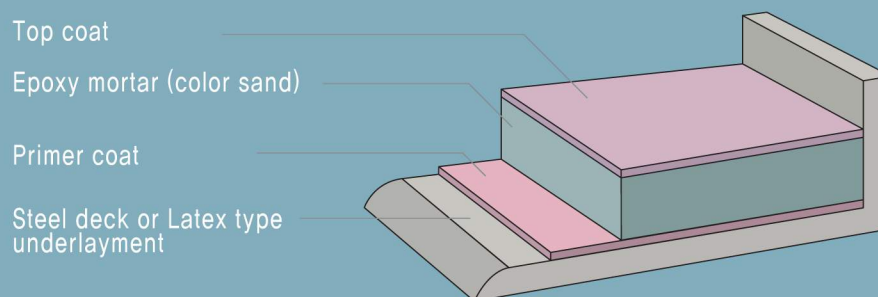


BILLYTEX EP-100

Epoxy deck Covering

>> Production description

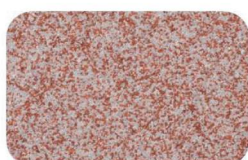
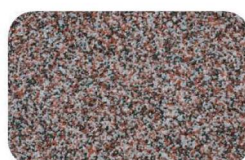
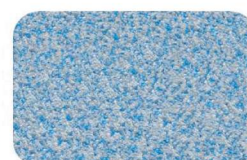
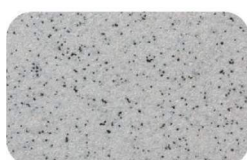
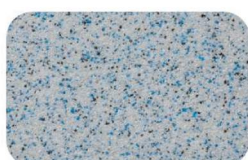
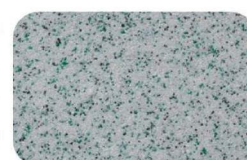
BILLYTEX EP-100 is a deck covering material made by two-part epoxy type. And it has possible to make magnificent appearance due to wide range of color selection. BILLYTEX EP-100 has generally used it wet area on ship. Also it has excellent characteristics as water proof, adhesive property, wear resistance, chemical resistance and acid resistance. It also satisfies 2010 FTP CODE PART 5.

>> Typical Application**>> Certificates**

CE (MED)	USCG	DNV.GL	ABS
O	O	O	O

>> Packing unit and quantity

Process	Material	Standard Thickness	Quantity (kg/m ²)	Packing Unit
Primer Coat	Resin	0.5mm	0.3	2kg
	Hardener			0.8kg
Mortar Coat	Resin	4mm	1.13	2.4kg
	Hardener			0.87kg
	Color sand		6.2	18kg
Top Coat	Resin	0.5mm	0.5	2kg
	Hardener			1.09kg

**DH-500****DH-501****DH-502****DH-503****DH-601****DH-602****DH-603****DH-604**

>> Installation

1) Preparation

Before use EP-100, the surface must be clean. When surface has been left alone more than 3 days after the surface treatment, it should be coated by Epoxy Primer.

2) Primer Coat

Coat Epoxy Primer with roller and brush evenly on the floor that is surface-treated. Sprinkle #3 sand on Epoxy primer-coated floor(Around 200g/m²).

3) Mortar Coat

After Primer Coat is dried, mix Epoxy Mortar with Color Sand in an appropriate ratio and apply leveling by using plastering tools.

4) Top Coat

After Mortar Coat is dried enough, apply mixed Epoxy Top evenly by using rubber scraper and roller. If you want to give embow effect on surface, use the sponge roller. If any case of bubble or airpocket on EP-100, than use the DCS-100 to remove the bubble.

>> Installation suggestions

Be cautious about maintain proper temperature since this is two-part Epoxy Type. If mixing ratio of mixture is incorrect, curing does not occur. Detail information of installation, please review on the installation manual.

>> Expiry date : 12 months

>> Technical Description

	Unit	Result	Note
Basis	–	Silica sand, Color sand, Epoxy	
Density	g/cm ³	Approx. 1.8	
Pot life	min	Approx. 60	at 20°C & 65% RH
Curing time	hours	Approx. 24	at 20°C
Compression strength	MPa	78.6	KS F 4041
Flexural strength	MPa	29.5	KS F 4041
Wear resistance		AR1	BS EN 13892-4
Adhesion strength	MPa	2.6	KS F 4716

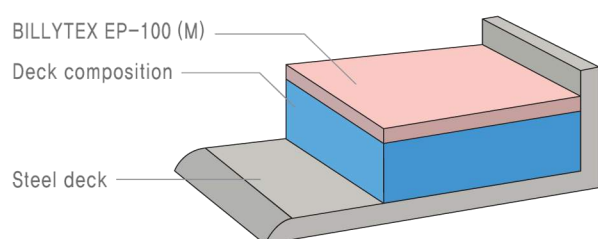


BILLYTEX EP-100(M) – Epoxy moisture Membrane

>> Production description

BILLYTEX EP-100(M) product is for waterproof type function of final coating on top of underlayment. It has certified by 2010 FTP CODE PART 5, and it can be apply on wet area.(Excellence waterproof type)

>> Typical Application



>> Certificates

CE (MED)	DNV.GL
O	O

>> Packing unit and quantity

Process	Material	Standard Thickness	Quantity (kg/m ²)	Packing Unit
EP-100 (M)	Resin	2mm	2.4	2kg
	Hardener			1kg

>> Installation

1) Preparation

Before use EP-100(M), the underlayment of deck composition must kept curing period by at least 15days and the surface must be clean. Best curing condition of deck covering is lesser than 6% of moisture content.

2) EP-100(M) Coat

Use a saw shape of trowel to apply the EP-100(M) on top of deck covering by thickness as 2mm to be even surface. If any case of bubble or airpocket on EP-100(M), than use the DCS-100 to remove the bubble.

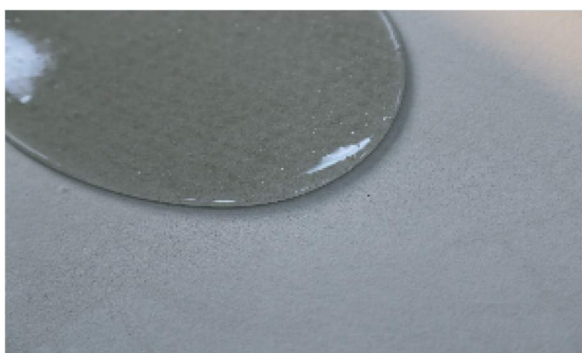
>> Installation suggestions

Be cautious about maintain proper temperature since this is two-part Epoxy Type. If mixing ratio of mixture is incorrect, curing does not occur. Detail information of installation, please review on the installation manual.

>> Expiry date : 12 months

>> Technical Description

	Unit	Result	Note
Basis		Epoxy	
Density	g/cm ³	Approx. 1.25	
Pot life	Min	Approx. 60	at 20°C & 65% RH
Curing time	hours	Approx. 60	at 20°C
Compression strength	MPa	–	KS F 4041
Flexural strength	MPa	77.3	KS F 4041
Adhesion strength	MPa	2.0	KS F 4716

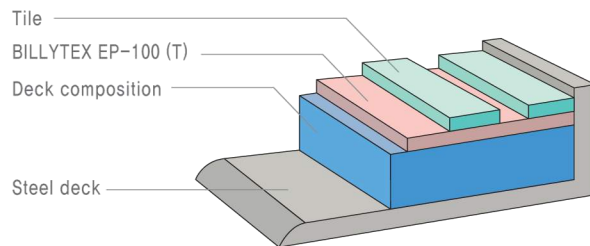


BILLYTEX EP-100(T) – Epoxy Tile adhesive

>> Production description

BILLYTEX EP-100(T) product is epoxy for tile adhesive and it is excellence adhesion between tile and deck composition. This product characteristic is waterproof.

>> Typical Application



>> Installation

1) Preparation

Before use EP-100(T), best curing condition of deck composition is lesser than 6% of moisture content.

2) EP-100(T) Coat

Use a trowel to apply the EP-100(T) on top of deck composition by even surface and work on tile installation.

>> Installation suggestions

Be cautious about maintain proper temperature since this is two-part Epoxy Type. If mixing ratio of mixture is incorrect, curing does not occur. Detail information of installation, please review on the installation manual.

>> Expiry date : 12 months

>> Certificates

CE (MED)	USCG	DNV .GL	ABS
O	O	O	O

>> Packing unit and quantity

Process	Material	Standard Thickness	Quantity (kg/m ²)	Packing Unit
EP-100 (T)	Resin	2mm	2.4	2kg
	Hardener			1.09kg

>> Technical Description

	Unit	Result	Note
Basis		Epoxy	
Density	g/cm ³	Approx. 1.3	
Pot life	min	Approx. 60	at 20°C & 65% RH
Curing time	hours	Approx. 24	at 20°C
Compression strength	MPa	–	KS F 4041
Flexural strength	MPa	68.3	KS F 4041
Adhesion strength	MPa	2.0	KS F 4716



DAEHYUP TECH Co., Ltd. provides a complete range of marine deck covering products such as powder, latex, epoxy and urethane types.

We have been developing our products more than two decades through various experience in manufacturing and installations.

The quality of our products is assured by ISO 9001:2000 and approved by major authorities including leading classification societies in compliance with the IMO rules.

DaeHyup Tech

CRAFTSMANSHIP COVERING YOUR DECK



88, Janggiteo 2-gil, Ungchon-myun, Ulju-gun, Ulsan, Republic of Korea
TEL: +82-52-277-9110-3
FAX: +82-52-277-9114-5
E-mail: daehyup@dae-hyup.com
www.dae-hyup.com